



GWC George Whitefield College

Explore

Deeper into God's Word, wider into God's world



How Explore Started

Over 25 years ago, the Principal of George Whitfield College sat with a dilemma. While many students from Africa were benefitting from a solid theological education at the college, there was no available and accessible training for the many rural pastors throughout Africa, as well as ordinary members of the church who wanted to know God better.

What was needed was an entirely new course and a new way of sharing it.

A course that could reach people on the ground, rather than waiting for them to come to it.

A course that didn't revolve around a personality or gifted teacher, but rather, centred on equipping ordinary Christians to explore the Bible for themselves.

A course written in Africa, for Africa—for lay Christians and leaders alike.

Moved to act, he began to assemble a team and create a correspondence course that would go on to impact thousands...

More about Explore and GWC

Launched in 1995, Explore is a correspondence course originating from George Whitfield College in Cape Town. It was created by Rev. Dr David Seccombe , with the Rev. Dr Mervyn Eloff and Dr John Newby and the Rev. John Child. The course was revised in 2015 to provide a more user-friendly version.

Established in 1989, George Whitfield College (GWC) is a reformed evangelical Anglican theological college on the tip of Africa that seeks to serve and equip Africa. Shaping minds via a classical theological education, GWC holds fast to its conviction that the Word of God is the primary agent of transformation in the world.

Why Explore?

According to the most recent statistics, there are now almost 685 million Christians in Africa, with 760 million expected by 2025. These figures have surpassed previous estimates by over 100 million.¹

Yet whilst the church continues to grow exponentially, there is a dire lack of affordable, relevant and accessible theological training. In fact, Christianity is growing so rapidly in Africa that theological colleges everywhere cannot raise up sufficient trained leaders to shepherd this flock. As a result, many Christians, young and old, are left at the mercy of false teaching which is widespread in Africa.

Deeper into God's Word, wider into God's world.

Our vision is not only to take the gospel throughout Africa but, through a facilitated process to equip many Christians in Africa to have a deeper understanding of God and His plan of salvation for the world.



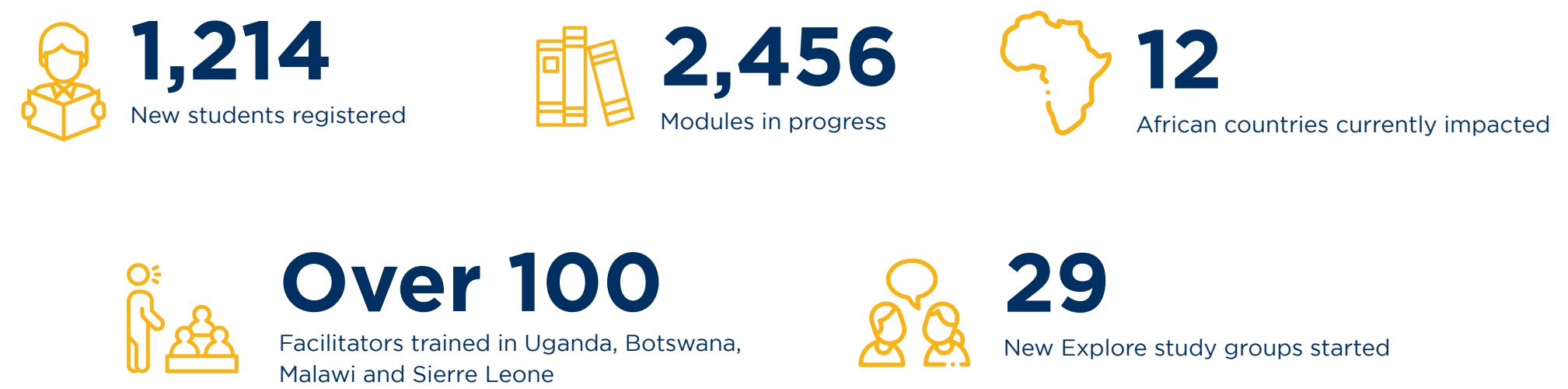
The Explore correspondence course consists of eight 12-week modules that have been designed to equip Christians from all walks of life with world-class, biblical theology. Throughout the course, the focus is intentionally directed toward students exploring God's Word for themselves, with the course material there to guide them.

Whilst students can study on their own, most find the interaction of a facilitated group provides the most benefit. The Explore team is equipping church leaders, across Africa with Explore facilitation skills.

Current Impact

More and more of Africa’s church leaders (from across the denominational spectrum) are discovering the powerful impact that the Explore discipleship tool has for leaders and lay members.

In 2021 alone:



“The Explore course gave me so much more of a deeper understanding of Scripture. I feel like I also developed as a person too.”

Explore Student

Future Goals



MORE HUB AND SPOKE STRUCTURES: From the 6 existing hubs we plan to develop sufficient hubs to serve the needs of Sub-Saharan Africa. Our first regional hub, with spokes extending into neighbouring countries will be established in the 1st Semester of 2022.



MORE TRANSLATIONS: Moving into Africa requires Explore to be translated into a number of languages. We have commenced translation into 7 languages and it is our prayer that in 2022 we will engage with partners to enable us to speed up this process.



INNOVATIVE TECHNOLOGY: To expand our reach and be able to stay in touch with facilitators in remote, rural areas, technological advancements will help us to multiply the opportunities. We have partnered with a charity enabling us to provide Explore facilitation sessions on a hand-held device, which will be used in rural areas where no internet connection is available.



WIDER REACH: Partnering with other trusted organisations, we will be expanding into South Sudan, Swaziland and Zambia in 2022, as well as establishing a firmer base in Mozambique. By 2027, we aim to have reached all 46 countries in Sub-Saharan Africa.



“The Explore course has given me an eternal perspective and a greater understanding of just how much God has done for me.”

Explore Student

Partner with Us

Join us as we continue to take God's Word deeper and wider still...

There are so many ways you can partner with us:

- **You can pray with us:** contact ncarrington@gwc.ac.za to be included in our exciting prayer programme.
- **You can open doors for us:** if you're a church leader who wishes to see hearts changed in Africa, or know influential people within a particular sphere or country that would benefit from Explore, please get in touch, or better yet: join us on a journey into Africa and support Explore on the ground.
- **You can support us financially:** donate toward ensuring this world-class discipleship tool impacts more people and churches in Africa.

When you partner financially with us you can choose to:

- sponsor a student or group of students
- partner with a particular church or Explore group in Africa
- sponsor a country or regional hub, or give towards the cost of a hub
- assist us as we build capacity within Explore to match the student growth by giving towards translations as well as technological improvements.

In return, we pledge to:

- partner with you so that you can feel the heart-beat of Africa.
- relate to you honestly and openly
- communicate to you regularly

YOUR GIFT, YOUR WAY:

You can give once-off, regularly or make a bequest – with the value and frequency of your donation remaining entirely up to you.

Whichever option you choose – you may also be able to gain tax-deductible incentives for your donation (depending on your country of residence).



"I grew up in a Hindu household and had no foundational knowledge of the Bible – the Explore course has given me this."

Explore Student

Sponsorship Options

1

SUPPORT ONE STUDENT for \$55 to complete all eight modules.

2

SUPPORT A GROUP OF TEN STUDENTS for \$550 in any country, and they'll be able to complete all eight modules.

3


SUPPORT A COUNTRY HUB OR A PORTION OF A COUNTRY HUB. Depending on the regions, hubs can be financed from anywhere between \$20k to \$40k.

4

SUPPORT A MODULE BEING TRANSLATED INTO AN AFRICAN LANGUAGE, from \$50k to \$120k.

5

SUPPORT A GRADUATE WITH AN AFRICAN STUDY BIBLE, or a generic Bible for those who cannot read English for \$22 each.



"The Explore course gave me so much more of a deeper understanding of Scripture. I feel like I also developed as a person too."

Explore Student

Contact



If you have any questions or would like to find out more about partnering with us, please reach out.

Nevil Carrington

Office number: +27 (0)21 788 1652
Mobile number: +27 82 374 8054
Email: ncarrington@gwc.ac.za

Address: 34 Beach Rd, Muizenberg, Cape Town, 7945
PO Box 64, Muizenberg, Cape Town, 7950

Web: www.gwc.ac.za/explore